

NOVITA

# Essentials

2023 AUTUMN / PRICE 12,90 €

*More than just  
a knitting magazine*

*YOUR GUIDE TO*

*Slow  
fashion*

12

Patterns in English  
Patronen in  
het Nederlands  
Anleitungen  
auf Deutsch

*MAKE Yourself  
THE NEW  
FAVOURITES*

*Seamless knits,  
interesting techniques,  
top-down patterns  
& autumn designs.*

# NOVITA ESSENTIALS

## EDITOR

*Linda Permanto,  
Marketing and Design Director*

## MANAGING EDITOR

*Saara Toikka, Design Manager*

## PATTERNS

*Jaana Etula and Piiia Maria Pekkanen*

## DESIGNS

*Mari Kangas, Henna Ketonen, Minna Metsänen,  
Piiia Maria Pekkanen, Linda Permanto, Saara Toikka*

## PHOTOS

*Mikko Ryhänen*

## GRAPHIC DESIGN

*Veera Ala-Vähälä*

*Printed at: PunaMurta, Joensuu 2023*

*info@novita.fi @novitaknits*

**NOVITA.COM**

*Novita Oy, Helsinki, +358 9 613 176*

# NOVITA



# ESSENTIALS

## – *All my most cherished knits*

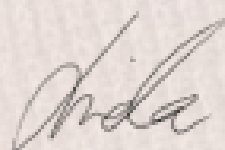
THIS MAGAZINE is for you. You, who love to wear knitted garments. You, who love the feel of stitches and quality materials on your skin. And you, who appreciate what it means to make a knitted garment yourself.

I wear knitted garments almost every day, and so do most of my colleagues here at Novita. A modern knit is a versatile cornerstone of your wardrobe, a staple that transcends time and trends and yet is easily adapted to meet the requirements of changing seasons and special occasions. For all of us here at Novita, a self-made garment is a symbol of the value of making things by hand, both psychologically and physically speaking. A handmade garment is the real alternative to fast fashion and a cherished object – whether you wear it yourself or gift it to someone.

When putting this magazine together, we wanted to create an irresistible collection of knitted garments and accessories, which would be equally suitable for the everyday and for moments of celebration. To complement the patterns, we've compiled some helpful fashion tips and yarn ideas. In addition, our website, which is being given a revamp this October, includes some inspiring styling ideas and helpful tutorials for beginners.

It is my hope that in this magazine you will find many exciting projects which bring you to the world of knitting and slow fashion – a world where it's easy to relax and create new things, responsibly and with love.

A knitted garment is like a gentle touch. A stitch, a moment, a memory which will stay in your heart forever!

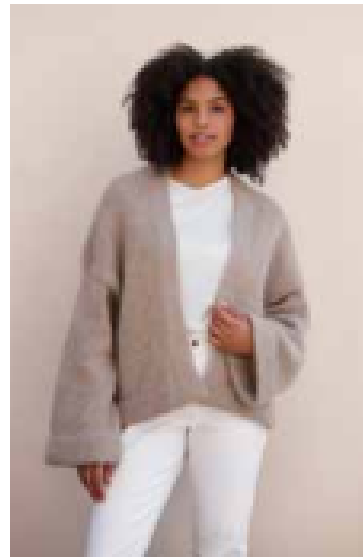


Linda Permanto  
Editor



Diana

p. 58



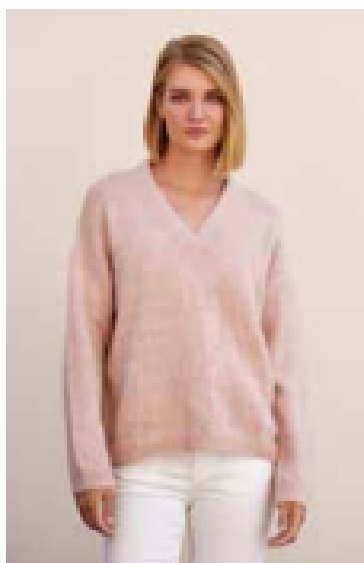
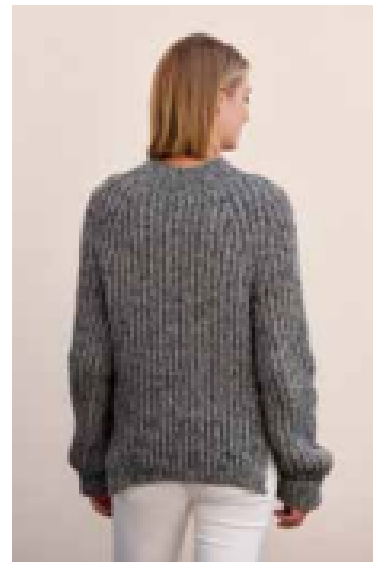
Karla

p. 4



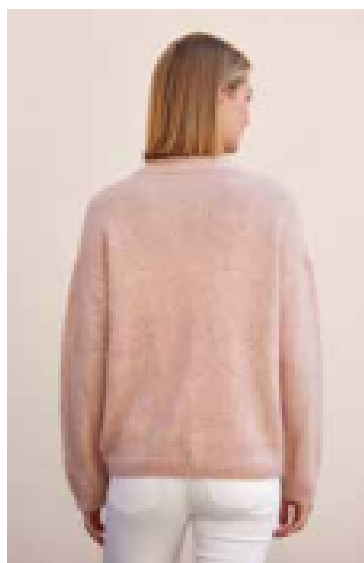
Andie

p. 10



Camilla

p. 16



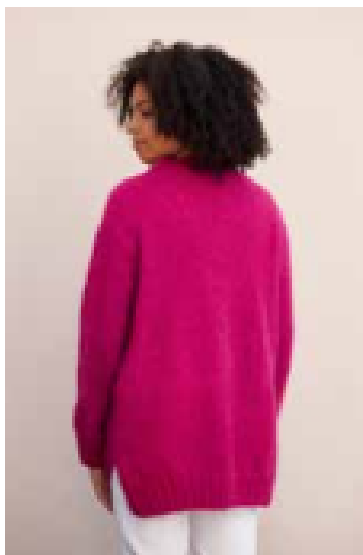
Penelope

p. 22





Scarlett



p. 32



Tove



p. 42



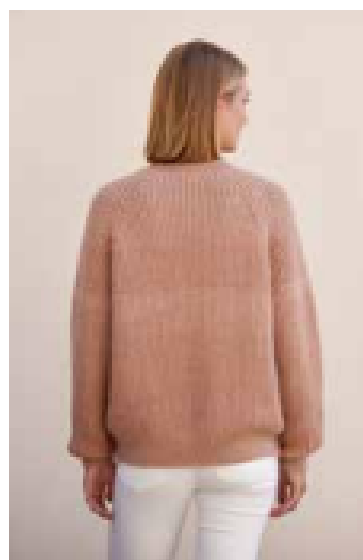
Roxanne



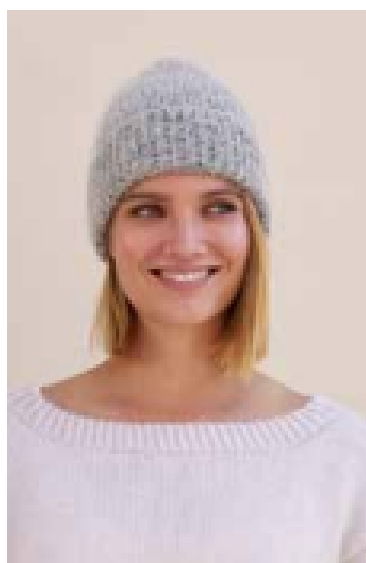
p. 50



Ebba



p. 66



Alexis

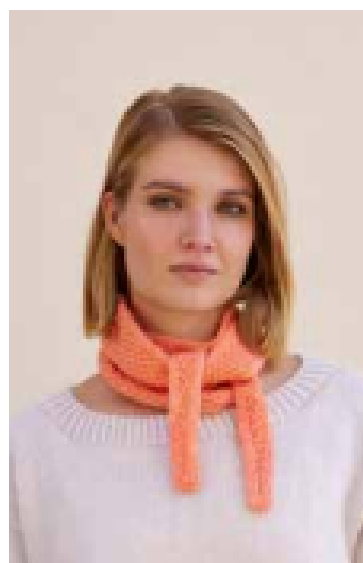


p. 76



Fiona

p. 38



Zaza

p. 82



NOVITA HEHKU

DESIGN:  
LINDA PERMANTO

#novitaessentials

# Karla

## *Cardigan*

Karla is a cardigan that's perfect for any occasion. Knitted from the Novita Hehku yarn, which is made from all-natural materials, the cardigan is even well-suited to fancier events if you combine it with the right accessories. And it's so comfy that you'll want to wear it home as well. The cardigan is knitted starting with the back neck border. Knitted with two strands of yarn held together, Karla is a surprisingly quick and easy project even for a beginner – once you get the hang of the technique. There are helpful tutorials for double stockinette stitch at [novita.com](http://novita.com). The techniques are easy to learn, and after watching them, even a beginner will be able to make their own Karla cardigan.





NOVITA ISOVELI & TUULI

DESIGN:  
LINDA PERMANTO

#novitaessentials

# Andie

## *Sweater*

The Andie raglan sweater is a perfect choice for a brisk walk. The airy texture of the fabric comes from working brioche stitch with the Novita Isoveli and Tuuli yarns held together. Andie works perfectly with either skirt or trousers, and you can easily wear a collared shirt under it, too. The raglan construction and brioche fabric ensure a comfy fit. Andie is also a surprisingly quick knit thanks to the generously thick yarn combination. Andie is knitted top-down in the round and without any seams. The neckline, cuffs and hem feature a ribbed border. The combination of two different-coloured and different-weight yarns results in a vibrant and interesting texture.



### *Relaxed*

---

A lovely flared skirt will really bring Andie alive, adding a bit of femininity and softness to your look.

### *Casual*

---

Combine Andie with a pair of cropped trousers and a classic collared shirt. And don't forget your Converse shoes!

### *Comfy*

---

Knit a larger-sized Andie and wrap yourself in it on those hygge weekends.

## *Two yarns, vibrant texture*

The Andie sweater is a nice and easy project, knitted top-down in the round and without seams. It's also a great choice for practising brioche, thanks to the large needle size. The vibrant, mottled texture is the result of combining the thick Novita Isoveli yarn with the fluffy Novita Tuuli mohair blend.

NOVITA SOFT MERINO 4PLY & TUULI

DESIGN:  
MINNA METSÄNEN

#novitaessentials

# Camilla

## *Sweater*

This knitted V-neck sweater is a real pastel classic for your wardrobe. The delicate Camilla sweater is knitted using two yarns – Novita Soft Merino 4PLY and Tuuli – held together, making for a vibrant fabric. The Tuuli yarn brings in some luxurious fluffiness and at the same time helps hide any uneven spots in your knitting. The low V-neck makes the loose-fitting garment look a touch lighter. The sweater is knitted top-down and seamlessly starting from the back neckline. The stitches for the back are picked up from the border, and the back is then knitted flat down to the armholes. The front stitches are picked up from the back shoulder, and the body is knitted in the round after the armholes. Details such as the twisted ribbing in the hem and cuffs and the Italian bind-off add to the stylish look.





### *One sweater, two styles*

- ③ **Everyday life** – A V-neck sweater is a real classic. That's why it's a great choice for almost every moment in your life. On weekdays, wear a thin turtleneck under the sweater and pair it with relaxed stonewashed jeans.
- ③ **Party time** – The Camilla sweater combined with a pleated or tulle skirt makes for simple elegance. Add some jewellery if you want to make it more special.



NOVITA SOFT MERINO 4PLY & HEHKU

DESIGN:  
SAARA TOIKKA

#novitaessentials

# Penelope

## *Sweater*

### *Striped*

This loose-fitting striped sweater is a real wardrobe staple that you'll want to wear every day. Penelope won't leave anyone cold. Besides the block stripes, the sweater features such details as the deep slits and wide saddle sleeves. Knitted using the Novita Hehku and Soft Merino 4PLY yarns together, the sweater is a quick and easy project. Containing natural materials only, the fabric feels warm and luxuriously soft. Penelope is knitted top-down and without any seams starting from the neckline. The pattern features two alternate neckline versions to choose from. Also, check page 26 to see how different the garment looks when it's made in one colour only.



## *Top-down and seamlessly*

The Penelope sweater is knitted seamlessly and from the top down with two strands of yarn, Novita Hehku and Soft Merino 4PLY held together. After the neckline you'll make the saddle shoulder pieces from which you pick up the sts for the back. The back and front are knitted separately down to the armholes, with short row shaping in the shoulders and neckline.



### *An eye for detail*

One gorgeous detail about the Penelope sweater are the deep side slits. The edge of the slit is finished with twisted ribbing which is also used in the neckline, hem and cuffs. At the stripes, the slit ribbing is worked in intarsia to keep the border one colour. The stitches for the back slit are picked up from the wrong side of the front piece to keep it neat.

### *Freshen up the classic sweater like this:*

- ① Pair with a trendy pleat or satin skirt.
- ② Create a strong look with jeans and a pair of boots.
- ③ A classic striped knit goes well with other classic items: a bow and a ponytail, a pair of cute Audrey Hepburn style ballerina shoes, and some MAC Lady Danger lipstick.



NOVITA SOFT MERINO 4PLY & HEHKU

DESIGN:  
SAARA TOIKKA

#novitaessentials

# Penelope

*Sweater*

*Solid*

The easiest way to modify a pattern is changing the colour. The Penelope transforms completely when you make it in a solid one-colour version. The stripeless fabric brings out the details of the garment, like the slits and the trendy saddle shoulders. An Italian bind-off or a stretchy bind-off at the hem and cuffs will give it a nice finish. The slightly different shades of the Novita Hehku and Soft Merino 4PLY yarns provide a gorgeous, vibrant texture.



### *Make your own modifications*

The solid Penelope sweater has a short folded border at the neck opening, making it nice and round, while the striped version is made with a higher collar. The neck border is worked in the round, and it's very easy to make it just the right size. Be sure to also check where the slits will fall by trying the sweater on as you're making it, especially if you want to use a belt with it.

### *Styling your outfit:*

- ① Pass a belt through the slit, leaving the back hem free.
- ② Combine with a feminine dress, and don't forget your boots!
- ③ Go for a harmonious set – choose leather pants and a pair of Dr Martens to go with the sweater.

NOVITA HEHKU

DESIGN:  
PIIA MARIA PEKKANEN

#novitaessentials

# Scarlett

## *Sweater*

The relaxed but stylish Scarlett sweater is a warm and trendy choice for autumn weather. The long tunic-like garment will go equally well with slim leather pants or a satin skirt. The intense pink means this sweater will definitely not go unnoticed! Knitted from the soft and fluffy Novita Hehku yarn, the piece is worked top-down and without any seams, starting from the neckline.

Some of the garment's stylish details include the decorative raglan seams and the split hem.





## *Details aplenty*

The Scarlett sweater is knitted from the top down, in the round and without any seams. Starting from the slit, the back and front hem are knitted separately. The raglan seam is just one of the beautiful little details of the eye-catching sweater. The neckline features an Italian cast-on, resulting in a neat look. Check the pattern to see how to make an Italian cast-on for 2x2 ribbing.

## *Custom fun!*

Make the garment your own. Sometimes it's nice to just follow the pattern to a tee and enjoy how easy it is to knit. Sometimes, however, you feel the urge to modify the pattern a bit to make it more to your liking. The Scarlett sweater is perfect as it is, but here's a few tips on how to have some additional fun with it:

- ☑ Make it a great deal shorter. A loose sweater is just as wonderful even when it only reaches your hips.
- ☑ Choose a fresh pair of colours and add some stripes to the garment, perhaps a few rows in the hem? Or how about making a fully striped version?
- ☑ Choose a different yarn! The sample was knitted using the fluffy Novita Hehku yarn, but you can use another yarn just as well, 7 Veljestä Nature, for instance. Before starting, however, be sure to swatch and choose your needle size so that you can match the gauge given in the pattern.



NOVITA HEHKU

DESIGN:  
LINDA PERMANTO

#novitaessentials

# Fiona

## *Scarf*

A long and wide knitted scarf never goes out of fashion! The Fiona scarf is ideal for wrapping yourself in on chilly days. It's so long that you can wrap it around your neck several times, but the equally stylish alternative is letting the ends hang long. The simple and elegant scarf is knitted using the fluffy Novita Hehku mohair blend yarn. The scarf is knitted in double stockinette stitch, so it will be nice and chunky and look the same on both sides. Finish with a generous fringe to give it some extra length.





# Fiona *Scarf*

NL p. 105

DE s. 131

**Designer** Linda Permanto

**Size** Approx. 32 cm x 200 cm / 12½ in x 79 in

**Yarn demand** Novita Hehku

(7021) Inspiration, (0111) Relaxed, (513) Hot or (516) Net 300 g

**Needles** Novita 5 mm (UK 6 / US 8) or size needed for gauge

**Stitch pattern** Double stockinette stitch: Row 1 (RS): \*k1, slip 1 with yarn in front\*, repeat \*-\* to end of row. Turn work. Row 2 (WS): \*k1, slip 1 with yarn in front\*, repeat \*-\* to end of row. Turn work. Keep repeating rows 1-2.

**Gauge** 24 sts in double stockinette st = 10 cm / 4 in

Cast on 80 sts and work double stockinette st until the scarf measures approx. 200 cm. Bind off in ribbing.

## Finishing

**Fringe:** For each fringe, cut 2 approx. 40 cm long pieces of yarn. Fold the bundle of yarn and pull the folded end through the edge of the scarf. Pull the open end through the loop of the folded end and tighten. At both ends, attach 1 fringe to each st.

NOVITA WOOLLY WOOD & TUULI

DESIGN:  
LINDA PERMANTO

#novitaessentials

# Tove

## *Sweater*

*Relaxed*

Is that my new favourite garment I see? Worked in brioche, the Tove sweater is the pride and joy of anyone who wears it. The impressive striping makes the sweater an interesting knit as well as an eye-catcher. Knitted using the Novita Woolly Wood and Tuuli yarns held together, the raglan sweater is worked in brioche from the top down and without any seams. The pattern features two different versions. The Relaxed Tove version is a trendy oversize sweater knitted with large needles. Check page 46 to see how different it looks when worked in half brioche and a smaller tension.





*Show it off! ↗*

- Choose a powerful, trendy colour
- Choose multicoloured striping
- Choose different-coloured cuffs



### *A sweater full of attitude!*

The impressive loose-fitting brioche sweater should find a home in every trendy knitter's wardrobe. The relaxed sweater goes equally well with jeans, leggings or a sleek skirt. The Tove sweater is knitted top-down and seamlessly using Novita Woolly Wood and Tuuli held together. Be sure to swatch and choose your needle size well so that you can match the gauge given in the pattern.



NOVITA WOOLLY WOOD & TUULI

DESIGN:  
LINDA PERMANTO

#novitaessentials

# Tove

## *Sweater*

*Slim*

The Tove sweater looks quite different when worked in half brioche and a smaller tension. The slimmer version is a lovely basic sweater suitable for many different styles. The striped garment will look a touch more feminine if you make the sleeves a bit longer and baggier. Both Tove versions are knitted from the same pattern using two yarns held together, Novita Woolly Wood and Tuuli. The oversize version is worked with larger needles and in brioche and the slim version with smaller needles and half brioche.



NOVITA HYGGE WOOL

DESIGN:  
PIIA MARIA PEKKANEN

#novitaessentials

# Roxanne

## *Vest*

A stylish knitted vest is a lighter alternative to a sweater! Knitted from the chunky Novita Hygge Wool, the Roxanne vest is nice and warm but at the same time keeps your hands free and gives your outfit a lighter look. The V-neck vest is a classic knit that works equally well with dress or trousers. You can make a closed vest or an open one with buttons, whichever you prefer. Knitted with large needles, Roxanne is such a quick knit and fun project that you can even make both versions in no time!





### *This season's quickest knit*

Both the open and closed versions of the vest are knitted top-down and seamlessly starting from the neck. The back neckline is shaped with short rows. The vest is finished with ribbed edgings at the armholes and neckline. The stitches for the borders are picked up from the garment. The buttonbands of the open version are knitted at the same time as the neckline border. Knitted from the chunky Novita Hygge Wool yarn, the vest will be ready in a flash!

### *An alternative to a sweater*

A vest will bring your style a touch of the bohemian. It is also a lighter alternative to a sweater. How about trying some of these ideas:

- ③ Combine with a flaring skirt.
- ④ Pair it with jeans and a T-shirt.
- ⑤ A silk shirt and a skirt. The thick texture of the vest will go well with thinner fabrics.
- ⑥ Make a nautical version with blue and white stripes.
- ⑦ Make it longer than in the pattern and combine with a buttoned shirt and leggings.



NOVITA SOFT MERINO 4PLY & TUULI

DESIGN:  
MINNA METSÄNEN

#novitaessentials

# Diana

## *Sweater*

A beautiful cable sweater is a versatile companion for many different looks. The impressive cabling of the Diana sweater forms a beautiful, uniform texture which gradually transforms to a rib pattern in the neckline and hem. The sweater is knitted top-down and without seams using two yarns held together:

Novita Soft Merino 4PLY and Tuuli. The thin merino yarn brings makes the fabric nice and soft, while the fluffiness of the Tuuli mohair blend adds in some luxury.



### *Make it your own!*

The beige Diana cable sweater is a timeless classic full of the discreet charm that a smart dresser requires. The vibrant look of the fabric results from the combination of two yarns held together, Novita Soft Merino 4PLY and the Tuuli mohair blend yarn. You can choose similar colourways or try out wildly different colours. In addition to your colour choices, you can modify the garment when finishing. If you want to have a more relaxed look, you can try to open up the cable texture a bit to make the sweater more loose-fitting.



### *Finishing touches*

Finishing can have a large effect on how a garment appears. Steaming, for example, is good for evening out any irregularities in your knitting, and it can also affect the size of the garment. There are many different finishing techniques. Choose your own!

- ☑ Even a bit of steaming can work wonders. Set your iron to full steam and carefully steam your garment. Do not let the iron touch the fabric. You can also use a damp gauze to steam through. After steaming, allow the piece to dry flat, pinned to its correct measurements.
- ☑ You can also wet block the piece. Soak the garment in lukewarm water for at least 20 minutes so that there's time for the wool fibre to soak in some water. Remove the extra water by wrapping the piece in a towel and carefully squeezing out the water. Make sure the piece won't stretch in the process. Lay the garment on a flat surface and allow to dry. You can use pins to better keep it in the correct shape.



NOVITA 7 VELJESTÄ NATURE & TUULI

DESIGN:  
MINNA METSÄNEN

#novitaessentials

# Ebba

## *Sweater*

### *Basic*

The Ebba sweater is a classy wardrobe staple suitable for all kinds of occasions. Knitted in half brioche from the top down, the sweater has no seams to sew. Elegant details include the raglan increases and the neat bind-off edges at the hem and cuffs. The neck border is knitted after completing the rest, so you can easily adjust the height to your preference. The Ebba pattern features two different versions. The shorter basic version is knitted using Novita 7 Veljestä Nature and Tuuli held together, while the extended version uses 7 Veljestä Nature only.



*One pattern,  
two versions!*

Turn the page to see what the extended Ebba version and its higher collar look like.



## *Knitting responsibly*

A responsible knitter chooses knitwear that will stand the test of time, wear and tear as well as shifting fashions. If you only have time to knit one garment out of the Essentials collection, let it be this one. Ebba is a beautifully well-fitting sweater, soft like a cloud and very versatile to boot.

## *Responsible knitter:*

- ③ Choose responsibly produced material that includes natural fibres.
- ③ Choose a garment that you know you will keep using.
- ③ Choose a colour that defies your whims of taste.
- ④ A bit too big is better than too small.
- ③ Be careful and pay attention to your knitting and finishing.
- ③ Take good, loving care of your garment. Cherish it and make sure the moths won't get to it.
- ③ When you no longer need the item, sell it or unravel it and use the yarn for something else.

NOVITA 7 VELJESTÄ NATURE

DESIGN:  
MINNA METSÄNEN

#novitaessentials

# Ebba

## *Sweater*

### *Extended*

Turn your sweater into a tunic! The lovely Ebba sweater will look quite different if you make it tunic-length. This extended version of Ebba also features a higher collar. The basic version uses a combination of Novita 7 Veljestä and Tuuli yarns, whereas this extended version is knitted with 7 Veljestä Nature only.

Choose your own favourite of the two versions, or take elements from both and make your very own custom Ebba!







NOVITA SOFT MERINO 4PLY, TUULI & WONDER WOOL

DESIGN:  
HENNA KETONEN

#novitaessentials

# Alexis

## *Beanie*

Alexis is a no-frills hat that's perfect for everyone! The low-key rib hat oozes style and elegance. Choose a neutral colour for a minimalist look or a brighter one to give your outfit some pep! This autumn's classiest hat is knitted in ribbing from the top down. There are three alternatives to choose from: a thinner and chunkier version worked in 1x1 ribbing, as well as a 2x2 rib option. In addition, all three patterns feature three different sizes. The hat is knitted using multiple strands of yarn, and you can choose your favourite combination from the Novita Tuuli, Soft Merino 4PLY and Wonder Wool yarns.

Chunky



Light



Double Rib





NOVITA WONDER WOOL / WOOLLY WOOD & TUULI

DESIGN:  
SAARA TOIKKA

#novitaessentials

# Zaza

## *Scarf*

An outfit is all about the details. A small knitted scarf is a great way to add some colour to an outfit and make it more personal. The Zaza scarf is a quick project which you can make in one evening if you're quick. The scarf is worked in a combination of double seed stitch and double stockinette stitch which gives the edge a nice finishing touch. Why not make several of these lovely little scarfs?



# NOVITA

---

NOVITA.COM

PRICE 12,90 €

